

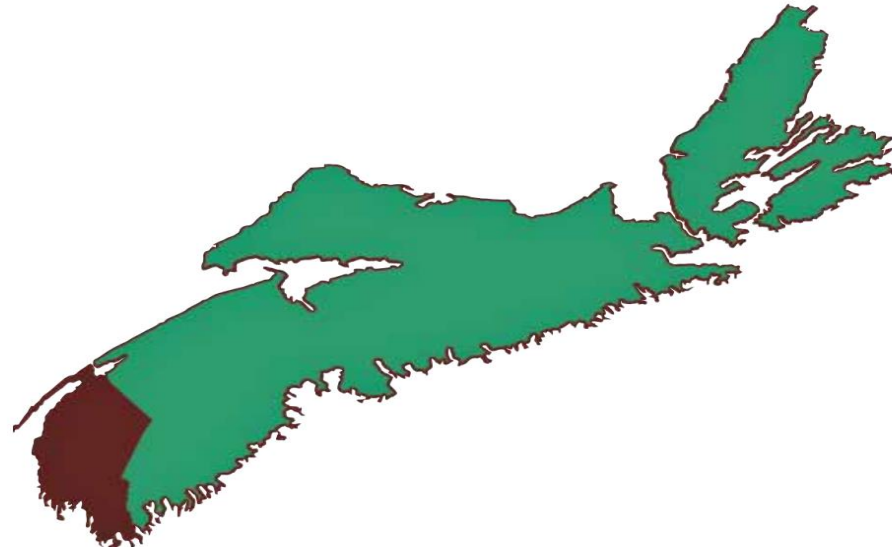
Western Regional Enterprise Network

Presentation to New Municipal Councils

Fall 2024

Who are we?

- Economic and Business Development
- From Digby to Barrington = 5 Municipalities, 2 Towns
- Population nearing 50K
- Operational since 2013



Western REN Values

- **People** are the Region's Core Strength
- **Diversity** is Crucial to Sustainability
- **Partnerships** are the Key to Success
- People Living in Western NS Value **Rural and Small Town Lifestyle**
- **Natural Resources** are the Backbone of Western NS
- **Creativity** drives Entrepreneurship & Innovation



Consistent strategy

Western Region barriers & challenges:

- *Communications infrastructure*
- *Capacity limitations of the energy grid*
- *Demographic profile and impact on ability to retain & attract business & talent*

Strategic Focus: ***Increasing investment in private & public sector, while addressing talent needs***



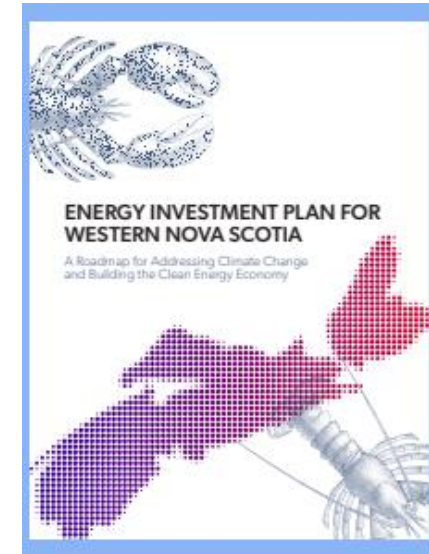
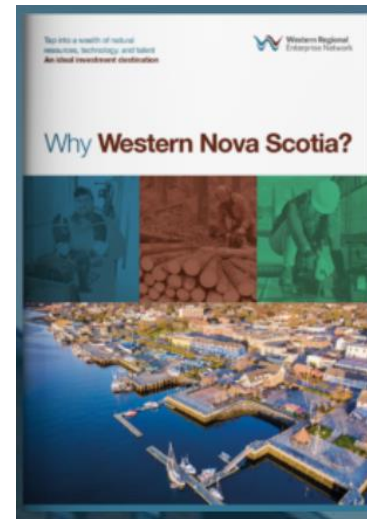
Increasing Investment in Private Sector – *Supporting the heart of our region*

- Business Retention & Expansion Program
- Business Transition Program
- Continuous Improvement Program



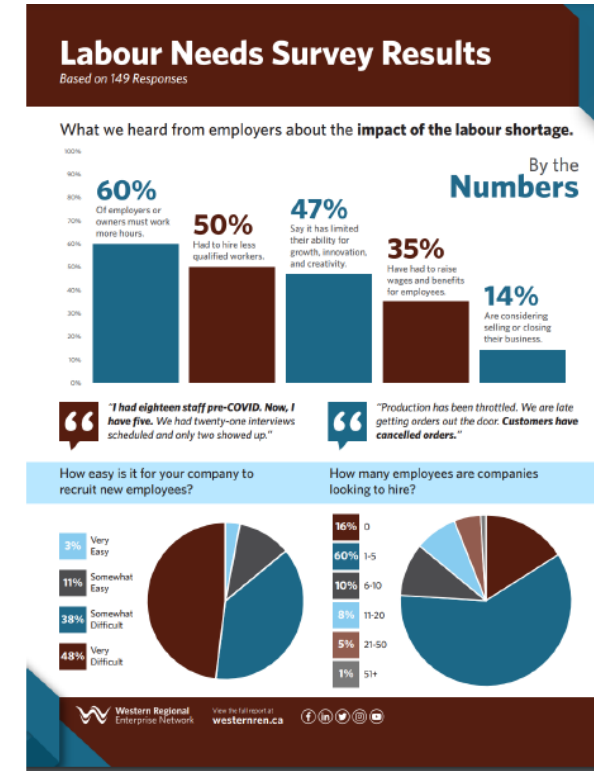
Increasing Investment in public sector

- Baseline energy usage study
- Access to reliable Internet & Cell service
- Why Western NS?
- Get Side-Trackd project



Addressing Talent Needs

- Connecting Business and Talent
- Planning regionally for immigration and population growth
- Making it easier to hire skilled international talent



Staff



Angelique LeBlanc
Chief Executive Officer
aleblanc@westernren.ca



Brenda LaGrandeur
Project Coordinator
blagrander@westernren.ca



Hélène D'Eon
Accounting and Finance Coordinator
hdeon@westernren.ca



Wade Cleveland
Communications Coordinator
wcleveland@westernren.ca



Miranda MacLean
Connector Program Manager
mmaclean@westernren.ca



Darshini Arogyaswamy
Western REN Board Coordinator
darshini@westernren.ca



Keval d'Entremont
Business Retention & Expansion
kdentremont@westernren.ca



Jessica Chant
Local Immigration Partnership Coordinator
jchant@westernren.ca



Michelle Levings
Immigration Employer Support
mlevings@westernren.ca





Western Regional
Enterprise Network



Questions?
